

Oracle Database (10gR2,11gR2 & 12cR1) on SUSE Linux Enterprise Server 11 SP3

Arun Singh

Introduction

This document is to help you understand minor difference you may encounter while installing Oracle Database on SUSE Linux Enterprise Server. Here we are using x86_64 version but steps are same for other platforms. We will use latest version of Oracle Database 12cR1 (12.1.0.1), 11gR2 (11.2.0.3) and 10gR2 (10.2.0.5).

Note:

This document is provided as a supplement to earlier SUSE released Installation guides for SLES11 SP1.

Software

Oracle database version 10.2.0.5 and 11.2.0.3 are available via Oracle Support portal (<http://support.oracle.com>). Oracle Database 12c is available for download at: <http://www.oracle.com/technetwork/database/enterprise-edition/downloads/database12c-linux-download-1959253.html>

Installation

Install SUSE Linux Enterprise Server 11 SP3 with “**Oracle Server Base**” and “**C/C++ Compiler and Tools**” pattern. You can follow Oracle Installation manual for selective required rpms.

```
oracle@sles11sp3:~> uname -a
Linux sles11sp3 3.0.76-0.11-default #1 SMP Fri Jun 14 08:21:43 UTC 2013 (ccab990)
 x86_64 x86_64 x86_64 GNU/Linux
oracle@sles11sp3:~> cat /etc/SuSE-release
SUSE Linux Enterprise Server 11 (x86_64)
VERSION = 11
PATCHLEVEL = 3
oracle@sles11sp3:~> █
```

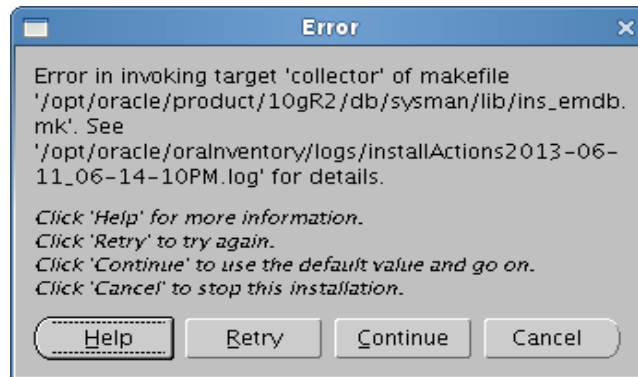
1. Installing Oracle Database 10.2.0.5

Please use Oracle Installation Guide for SLES11 SP1 for detailed instructions (http://ftp.novell.com/partners/oracle/docs/10gR2_sles11_sp1_install.pdf).

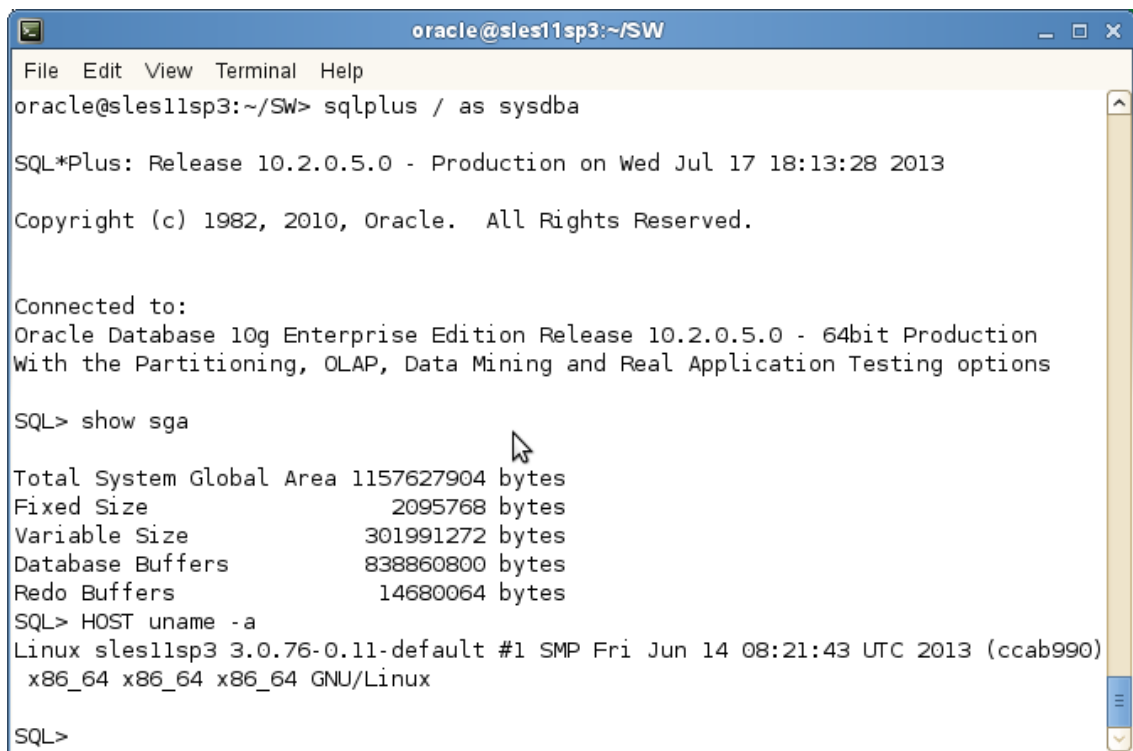
In short, you can follow the steps outlines below:

1. Install Oracle Database 10.2.0.1 as a **Database Software Only** option
 - a) Please use “**-ignoreSysPrereqs**” If SUSE Linux is not recognized by OUI. This happens only when OUI is older than current SLES version.

b) Ignore following linking warning



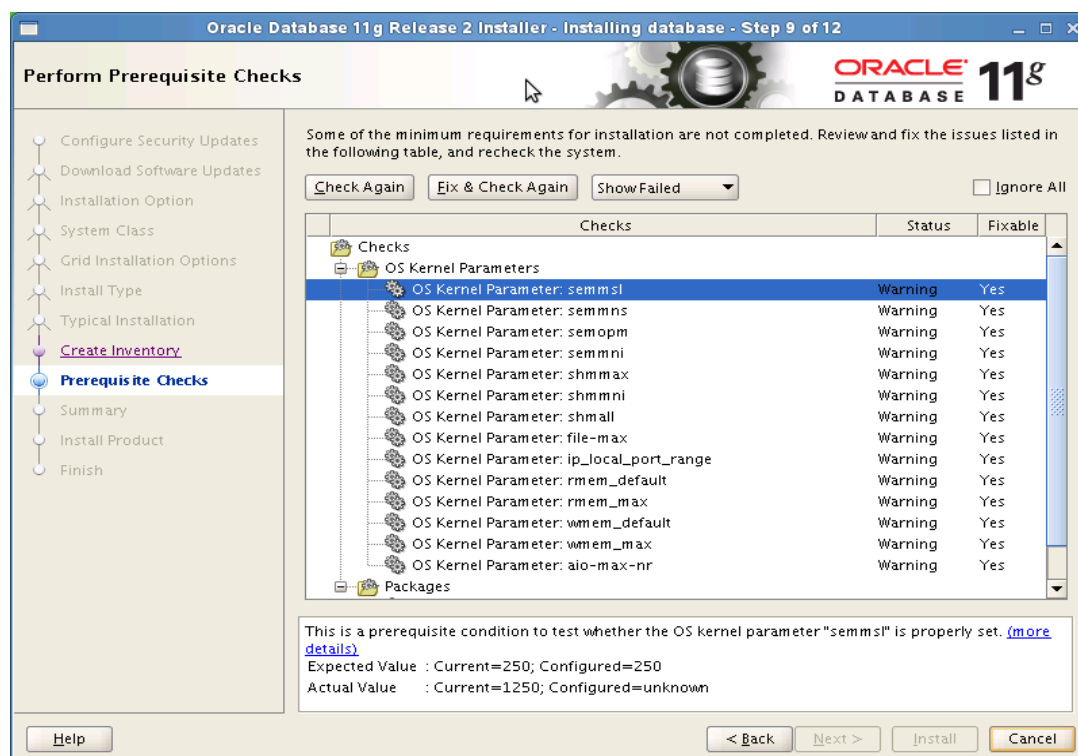
2. Install Oracle Database 10.2.0.5 Patch
3. Install Oracle Patch 8350262 (or latest CPU) – For detail refer Oracle Note 1217493.1
4. Configure Oracle Net Services (netca)
5. Create Oracle Database using Database Configuration Assistant(dbca)



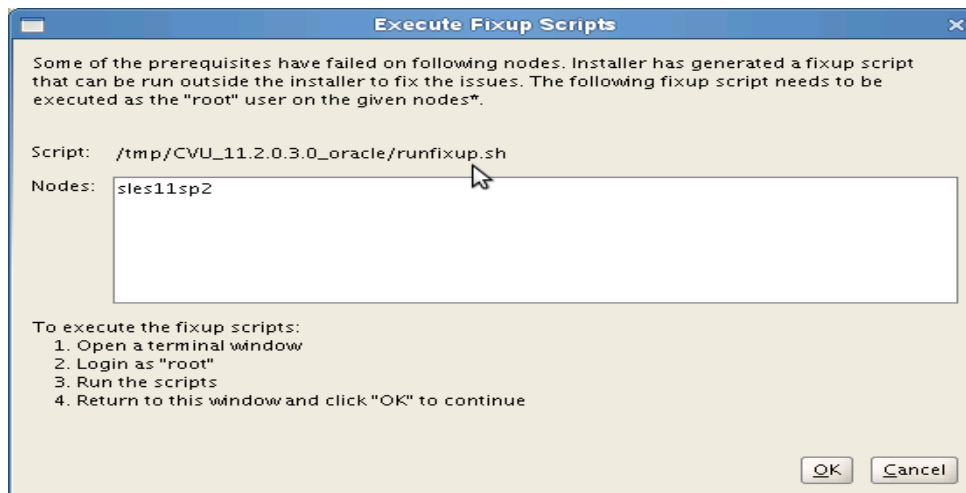
A terminal window titled "oracle@sles11sp3:~/SW" with a menu bar (File, Edit, View, Terminal, Help). The terminal shows a session with SQL*Plus. The user enters "sqlplus / as sysdba". The prompt "SQL*Plus: Release 10.2.0.5.0 - Production on Wed Jul 17 18:13:28 2013" is displayed, followed by "Copyright (c) 1982, 2010, Oracle. All Rights Reserved." and "Connected to: Oracle Database 10g Enterprise Edition Release 10.2.0.5.0 - 64bit Production With the Partitioning, OLAP, Data Mining and Real Application Testing options". The user enters "SQL> show sga", and the output is: "Total System Global Area 1157627904 bytes", "Fixed Size 2095768 bytes", "Variable Size 301991272 bytes", "Database Buffers 838860800 bytes", and "Redo Buffers 14680064 bytes". The user then enters "SQL> HOST uname -a", and the output is: "Linux sles11sp3 3.0.76-0.11-default #1 SMP Fri Jun 14 08:21:43 UTC 2013 (ccab990) x86_64 x86_64 x86_64 GNU/Linux". The prompt "SQL>" is visible at the bottom.

2. Installing Oracle Database 11.2.0.3

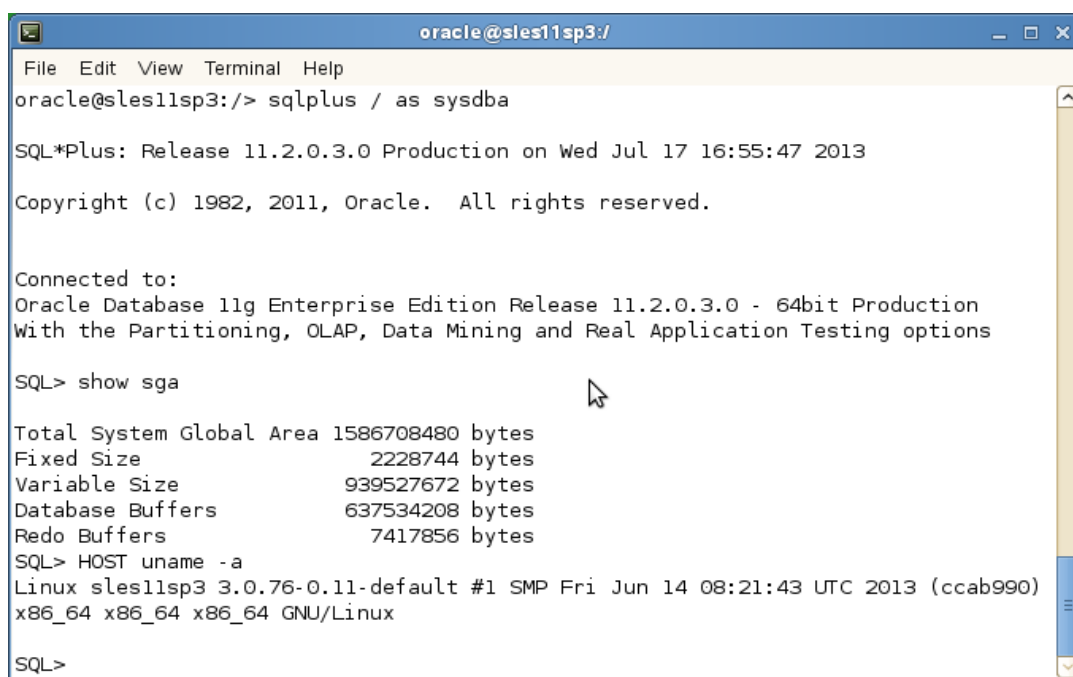
Please use Oracle 11gR2 Installation Guide for SLES11 SP1 (http://ftp.novell.com/partners/oracle/docs/11gR2_sles11_sp1_install.pdf), to get familiar with installation process. Instruction for SLES11 SP3 is similar, with following minor error/warning messages:



Select **“Fix & Check Again”** and run suggested script. This updates sysctl.conf file.



Select **OK** and continue installation.



```
oracle@sles11sp3:/
File Edit View Terminal Help
oracle@sles11sp3:~> sqlplus / as sysdba

SQL*Plus: Release 11.2.0.3.0 Production on Wed Jul 17 16:55:47 2013

Copyright (c) 1982, 2011, Oracle. All rights reserved.

Connected to:
Oracle Database 11g Enterprise Edition Release 11.2.0.3.0 - 64bit Production
With the Partitioning, OLAP, Data Mining and Real Application Testing options

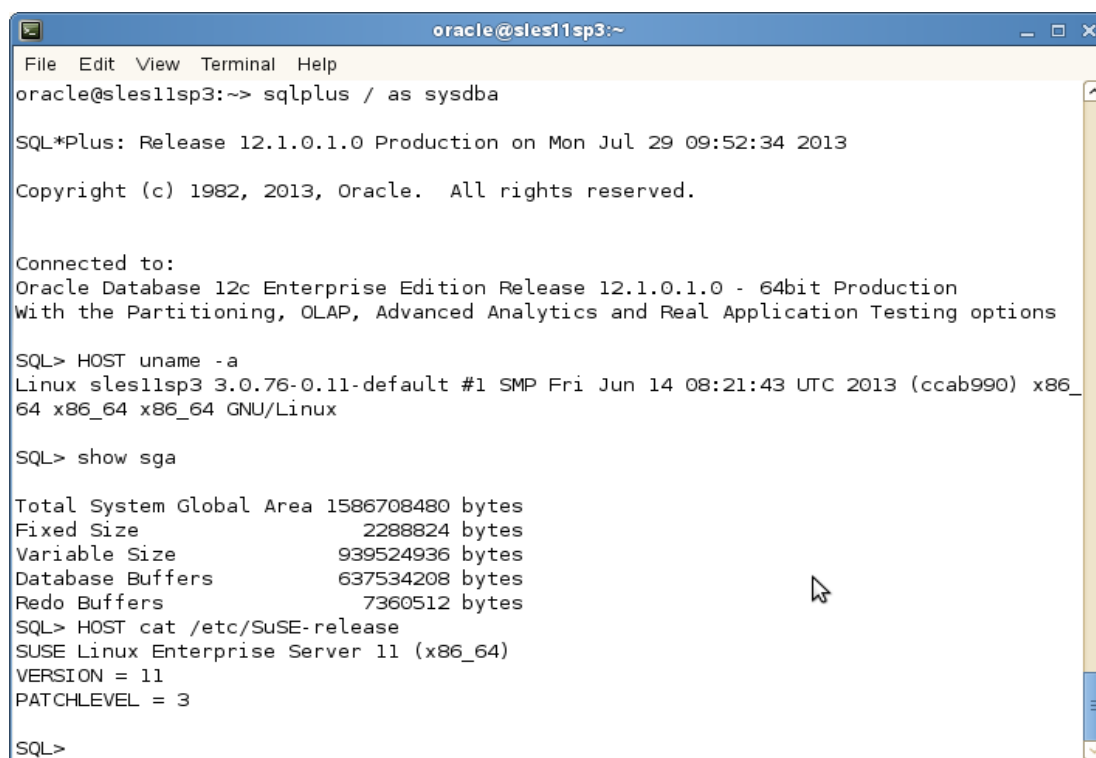
SQL> show sga

Total System Global Area 1586708480 bytes
Fixed Size                2228744 bytes
Variable Size             939527672 bytes
Database Buffers         637534208 bytes
Redo Buffers              7417856 bytes
SQL> HOST uname -a
Linux sles11sp3 3.0.76-0.11-default #1 SMP Fri Jun 14 08:21:43 UTC 2013 (ccab990)
x86_64 x86_64 x86_64 GNU/Linux

SQL>
```

3. Installing Oracle Database 12.1.0.1

Installing Oracle Database 12c is similar to 11.2.0.3. Following is screen-shot from newly installed system:



```
oracle@sles11sp3:~
File Edit View Terminal Help
oracle@sles11sp3:~> sqlplus / as sysdba

SQL*Plus: Release 12.1.0.1.0 Production on Mon Jul 29 09:52:34 2013

Copyright (c) 1982, 2013, Oracle. All rights reserved.

Connected to:
Oracle Database 12c Enterprise Edition Release 12.1.0.1.0 - 64bit Production
With the Partitioning, OLAP, Advanced Analytics and Real Application Testing options

SQL> HOST uname -a
Linux sles11sp3 3.0.76-0.11-default #1 SMP Fri Jun 14 08:21:43 UTC 2013 (ccab990) x86_
64 x86_64 x86_64 GNU/Linux

SQL> show sga

Total System Global Area 1586708480 bytes
Fixed Size                2288824 bytes
Variable Size             939524936 bytes
Database Buffers         637534208 bytes
Redo Buffers              7360512 bytes
SQL> HOST cat /etc/SUSE-release
SUSE Linux Enterprise Server 11 (x86_64)
VERSION = 11
PATCHLEVEL = 3

SQL>
```

Additional Information

Thank you for selecting SUSE Linux as your platform of choice. Please post your question or comments to SUSE mailing list at suse-oracle@listx.novell.com .

Updated – 07/29/2013 : Added Oracle Database12c related information